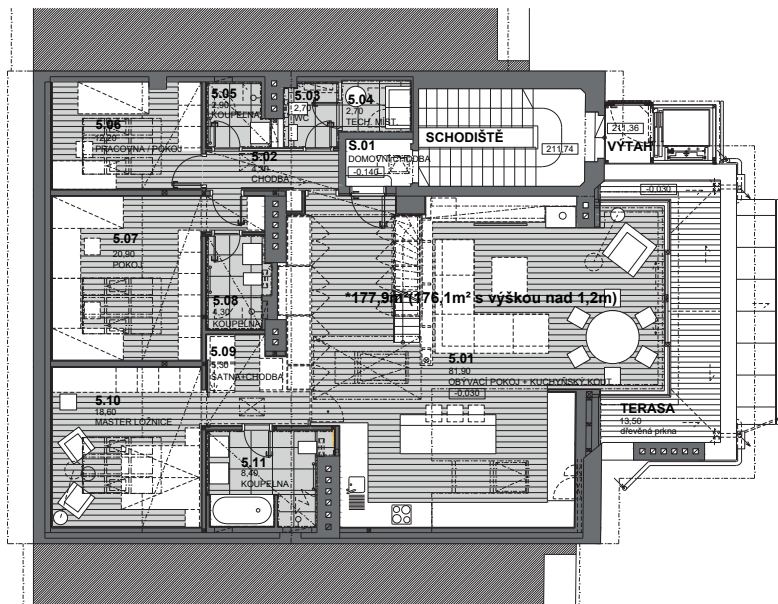
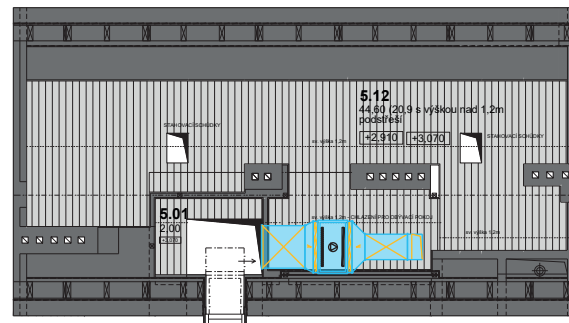


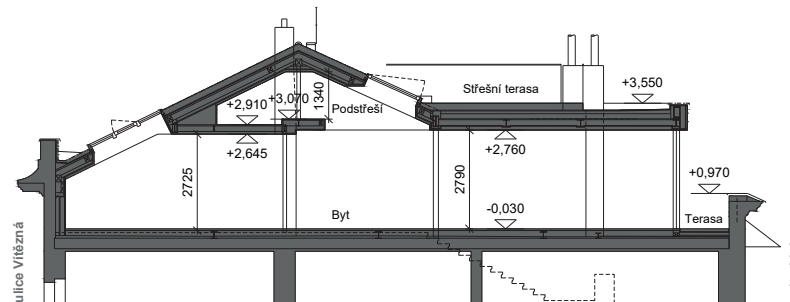
## V<sub>4</sub> FLOOR PLAN OF THE APARTMENT



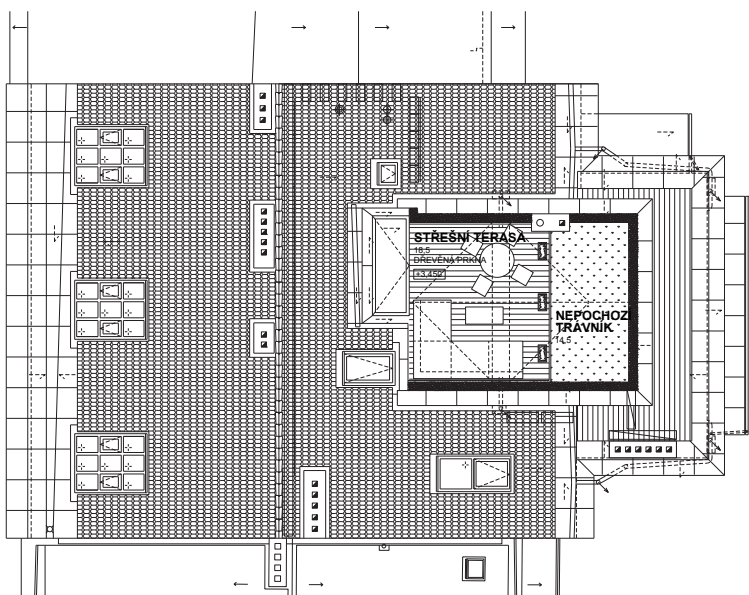
## V<sub>4</sub> FLOOR PLAN OF THE ATTIC



## V<sub>4</sub> FLAT SECTION



## V<sub>4</sub> ROOFTOP VIEW



# vítězná<sup>4</sup>

### DESCRIPTION OF THE HOUSING

vítězná<sup>4</sup>

Floor area of the apartment no. 6	<b>*177,9m<sup>2</sup></b>
Attic area	<b>46,6m<sup>2</sup></b>
Terrace	<b>**13,5m<sup>2</sup></b>
Roof terrace	<b>**18,5m<sup>2</sup></b>
<b>Total</b>	<b>256,5m<sup>2</sup></b>

\* Floor area according to the decree 366/2013Sb.

\*\* The outdoor terrace is for the exclusive use of apartment no. 6

Note: ±0,000 is the standard of the existing flat

**Apartment no. 6**  
**Vítězná 559/4, 118 00, Praha 1 - Malá Strana**

The apartment is approved in the state of 'shell and core', the floor assembly is realized at the level of the rough floor without underfloor heating

**AYOR**  
 DEVELOPMENT  
 www.ayor.cz